

3 Norfolk Mews Norfolk Street, Gloucester, Gloucestershire, GL1 1US

£700 PCM

FOR SALE



- AVAILABLE FROM 7/7/2026
- ALLOCATED PARKING SPACE TO SIDE OF PROPERTY
- WALKING DISTANCE TO GLOUCESTER QUAYS
- NO WHITE GOODS INCLUDED
- KITCHEN/ DINING AREA
- COUNCIL TAX BAND A
- HOLDING FEE £161.00
- SECURITY DEPOSIT £807.00
- EPC D

THE PROPERTY

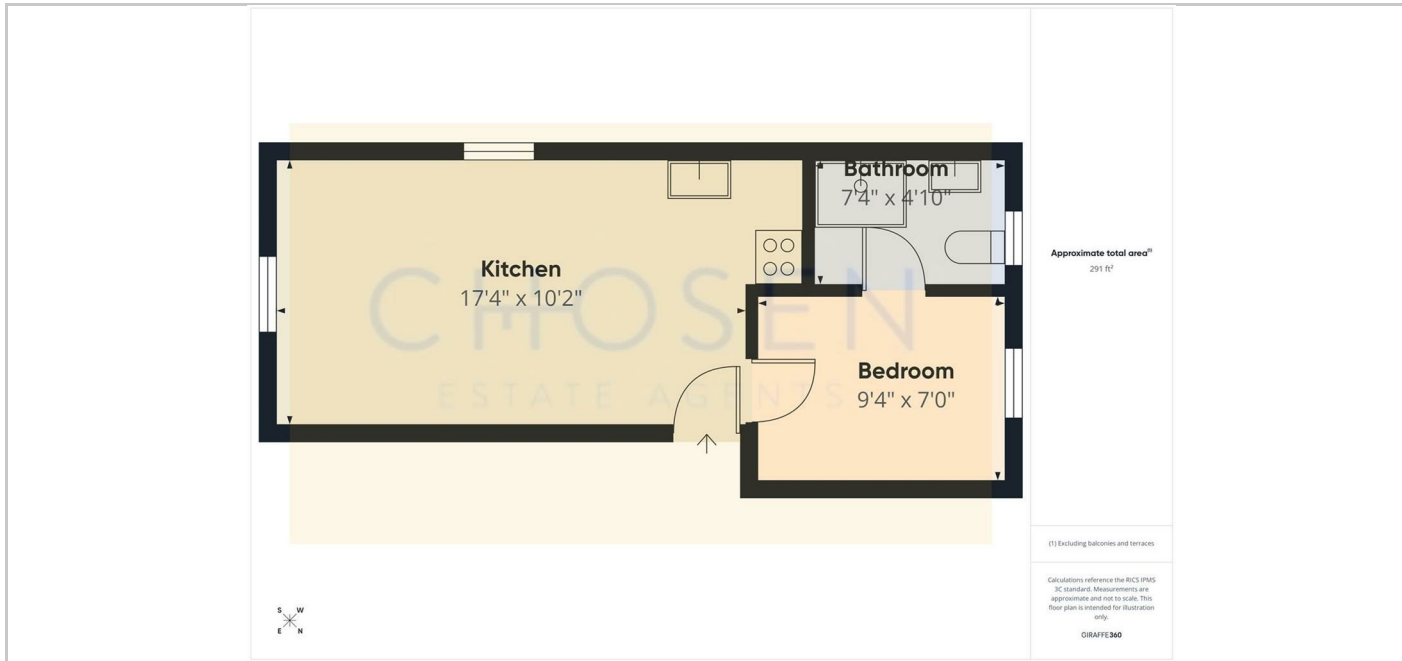
Chosen Estate Agents are delighted to offer this well-presented first-floor double bedroom apartment, located in Gloucester and within easy walking distance of the City Centre.

The accommodation features a bright sitting/dining room, kitchen area, a spacious double bedroom, and a modern bathroom. Further benefits include double glazing, allocated off-road parking, and access to communal gardens.

Holding Deposit: £161.00 based on 1 weeks' rent of asking price
 Security Deposit: £807.00 based on 5 weeks' rent of asking price
 Council Tax band: A Local Authority: Gloucester City Center
 EPC Band: D

Electricity supply: Mains Gas Supply: No gas Water supply: Mains
 Sewerage: Mains
 Heating: Electric heating Mobile phone coverage: i.e EE, Vodaphone, Three, O2

If satisfactory references are not obtained or you withdraw your application any financial loss to Chosen Estate Agents or the Landlord will be deducted from your holding deposit. If you or your guarantor provides information that is inaccurate, false, incomplete, or adverse credit not being disclosed then we may retain your holding deposit and reject your application.



SITUATION

Directions